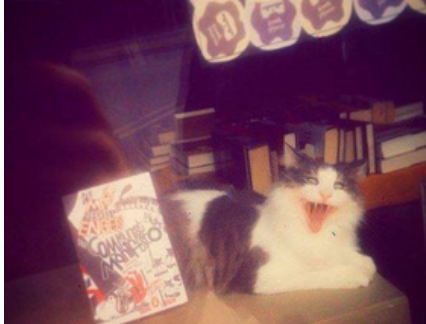




Springfield Regional Arts Council presents First Friday Art Walk

Members host events on the first Friday of the month or you can catch the displays throughout the month during regular hours. May's First Friday events will be on May 3rd with variable hours between 4:30-10 pm.

BookMarx



BookMarx is excited to exhibit **Bookmarx 10 Year Anniversary Photographic Retrospective**, a show dedicated to photos of the store and cats' first ten years contributed by their **staff and customers**. Catch the show open till **9 pm!**

BE Creative

BE Creative is excited to be open for May's Art Walk! They will be featuring a study on butterflies, made of paint, not alive. Join artist **Earlene Lee** at BE Creative from **5-8 pm** for **wine and charcuterie**.



Carl's Bad Designs



Join **Carl's Bad Designs** for their shop's **grand opening** from **5-10 pm** located at 314 S. Campbell Ave! They are excited to be showcasing runway pieces from Carl's Bad Designs and artwork from local artists **Saphira Gale** and **Hal Lueking**. Additionally, you can shop vintage clothes and handmade jewelry from **One World Library**. To celebrate, they will have refreshments and a **bracelet-making station** supplied with thrifed beads!

Park Central Branch Library



The **Library** will be open from **6:30-9 pm** for May's Art Walk hosting the very talented **Katie Hopkins**. Katie will be creating a live painting, watch as she makes her canvas come alive! You won't want to miss her brand-new series, **A Journey West**, making its debut.

The Downtown Church

The Downtown Church will be alive with **live music** from **Deja Crew**, feature **kids activities**, and have **popcorn and lemonade** to enjoy – best of all, it's all **FREE!** Join The Downtown Church from **6-8 pm** at the corner of Walnut & Jefferson for May's Art Walk.

MAY FIRST FRIDAY
ART WALK PARTY
MAY 3
6-8 PM

DEJA CREW 🎵
KIDS ACTIVITIES
POPCORN & LEMONADE



Brick City Gallery



Brick City Gallery is pleased to host an exhibition by **graduating students from the Department of Art and Design**. This exhibition shows the talent and skill of students who have spent years developing an artistic practice that will carry them into their professional careers. Catch the show from **6-9 pm** for FFAW!

May
2024

map on
page 2!



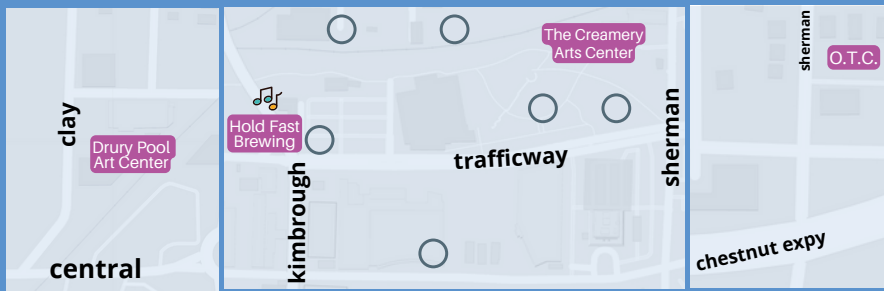
@firstfridayartwalk



@artwalksgf

springfield regional
**arts
council**

downtown arts district map



art walk venue



parking



sculpture walk art



@sculpturewalksgf



@sculpturewalkspringfield

sculpturewalkspringfield.org



Sculpture Walk Springfield features sculptures by local, national, and international artists throughout downtown. Their 8th annual collection of sculptures has been installed and will remain up until Spring 2024.

meet our ffaw members!

Meet our Art Walk Members who are open this month!



BE Creative, 430 S. Jefferson Ave. Suite 125, open 6-8pm for FFAW. Open regularly Mon-Fri 10am-6pm. (417) 281-8899 becreative.co



BookMarx, 325 E. Walnut St., Ste. 101, New & used books, art, and Googey the cat! Open until 9pm for FFAW, *regularly Mon-Sat 10:30am-7pm*. facebook.com/bookmarxbooks



Carl's Bad Designs, 314 S. Campbell Ave. Local art and sustainable fashion! Open regularly Tue - Thu 12pm - 4pm, Fri 12pm - 8pm, Sat 10am - 4pm. carls-bad-designs.square.site



Drury Pool Art Center, 940 N. Clay St. will be open for FFAW. Open regularly Mon-Fri 12:30-4:30pm, (417) 873-6337.



Fresh Gallery, 401 N. Boonville, open 6-9pm for FFAW. Fresh is a co-op gallery home to over 20 juried artists working in a variety of media. Open regularly Tues-Sat 11am-5pm. freshgallery.org, (417) 862-9300



Forming Art Studios, 330 South Ave, open for FFAW 6-9pm only. Peek in on their seven resident artists and sign up for classes and workshops! formedgallery.com/classes



Formed: An Artist Collective, 210 E. Walnut Street, open for FFAW 6-9pm. A multi-artist gallery and retail space hosting forty local and emerging artisans. Open regularly: Tue - Thurs 10am-6pm, Fri - Sat 10am-7pm, Sun 10am-2pm. (417) 350-1142, formedgallery.com



Gailey's Breakfast Cafe, 220 E. Walnut St., open for FFAW. Open regularly Sun-Tue 7am-3pm, Wed-Sat 7am-9pm. gaileysbreakfast.com (417) 866-5500.



Gillioz Theatre, 325 Park Central E., open for FFAW 6-9 pm. Box office open regularly Mon-Fri, 10am-4pm. gillioztheatre.com (417) 863-9491.



Historic Holland Building, 205 Park Central E., open 6-8pm for FFAW. Open regularly Mon-Fri 8am-5pm. thehollandbuilding.com (417) 861-7662.



Hold Fast Brewing, 235 N. Kimbrough Ave., open for FFAW 12pm-11pm. Open regularly Mon-Thurs 3-9pm, Fri-Sat 12-11pm and Sun from 11am-7pm. hfbrewing.com (417) 761-2318.



Hotel Vandivort, 305 E. Walnut, open for FFAW. The lobby is open 24/7! View their permanent collection. hotelvandivort.com (417) 832- 1515



J.L. Long Traders, 318 W. Walnut, open for FFAW 5-9pm. Find unique items and work by local craftsmen. Their Spring hours are Wed-Sun 1-5pm or by appointment. (417) 771-5452, jllongtraders.com



MSU's Brick City Gallery, 215 W. Mill. open for FFAW. Open regularly Mon-Fri 11am-6pm, and Sat from 12-4pm. (417) 836-6794 art.missouristate.edu/



MSU's Robert and Margaret Carolla Arts Exhibition Center, 326 N. Boonville, open for FFAW. Open regularly Mon-Fri 11am-6pm and Sat 12-4pm (417) 836-6999 or sec.missouristate.edu



Obelisk Home, 214 W. Phelps Ste 101, open 6-10pm for FFAW. Art gallery, retail store, and interior design! Three levels to explore. Open regularly Tues-Fri 10am-6pm & Sat 10am-5pm. obeliskhome.com (417) 616-6488



OTC Arts, Design & Humanities, 1001 E. Chestnut Expy, FFAW Sponsor. (417) 447-8975 <https://academics.otc.edu/finearts/>



Park Central Branch Library, 128 Park Central Square, open for FFAW 6:30pm-9pm. Downtown's library hosts art and frequent artist talks. Open regularly Mon-Sat 10am-6pm, Closed Sundays. (417) 831-1342



The Downtown Church, 413 E. Walnut, open for FFAW. Open at 10:30am on Sunday for Services. Office hours are Mon-Thu 8:30am-5pm. 417-866-4326, thedowntown.church



Transformation Gallery & Tattoo, 330 E. Walnut, open for FFAW 6-9pm. Open regularly Tue-Sat 9am-6pm. (417) 869-2338, transformationgallery.com/

Drury Pool Arts Center

Join Drury University at the **Drury Pool Arts Gallery** in their main gallery for May's FFAW! Their **Senior APEX Exhibition** will be open from **5-8 pm**. Be sure to check out the show!

Forming Art Studios



Forming Art Studios will have special guest musical artist **Tony Menown** jamming out at the studios from **6:30-8:30 pm** for FFAW. They will also have two guest artists, **Caryn McAdoo** and **Briton David** set up and ready to sell! Stop by on First Friday for **mini astrology readings** by **Misty Lane** from **6:30-8:30 pm**.

Carolla Arts Exhibition Center

Every semester, the **Carolla Arts Exhibition Center** is pleased to host an exhibition of work by **graduating students from the Department of Art and Design**. The spring exhibition showcases the talent and skill of students who have spent years developing a design practice that will carry them into their professional careers. Catch the show from **6-9 pm** for May's Art Walk!

Transformation Gallery & Tattoo

Transformation Gallery & Tattoo will be open for May's Art Walk! They will be open **6 - 9 pm** and will be showcasing art from their **talented staff** - be sure to check it out!

Hold Fast Brewing



Hold Fast Brewing is thrilled to kick off the summer months with the music of **Charlie Mellinger!** The brewery opens at **noon** with your favorite local brews on tap, **Fire Family BBQ** starts serving up their delicious eats at 5 pm, and music starts at **7 pm**. Your favorite downtown patio is waiting for you!

The Gillioz Theatre



THE THIRD FLOOR

Join the **Gillioz Center for Arts & Entertainment** from **6-9 pm** for May's FFAW! Ascend to **TheTHIRDFloor**, sip on crafted **cocktails** from the bar, peruse the **local artwork on display**, dive into the world of cinema with a **selection of short films**, and meet the **Gillioz Resident Companies!**

J.L. Long Traders

J.L. Long Traders will be open **10 am - 9 pm** for May's Art Walk! They are excited to feature **POETIC PORTRAITS**, featuring the work of students at the **Academy of Fine and Performing Arts (AFPA)**, one of Springfield Public Schools' choice programs for fifth graders. AFPA students explored their understanding of themselves and prominent historical figures through poetry and portraiture. Be sure to swing by to catch the show!

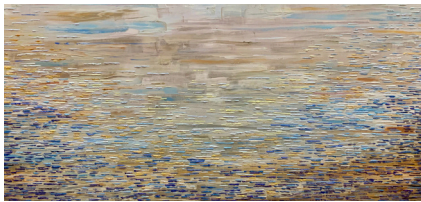


Fresh Gallery



Fresh Gallery is excited to be open for May's Art Walk from **5:30 - 9 pm** featuring work by artist **Deana Markus!** While you're there, be sure to check out work from their other gallery artists.

Obelisk Home



Obelisk Home will be open from **6-10 pm**. In their Main Gallery is the opening reception of **Soft Spoken Sunlight** by **J.D. Hull**. In their store is the opening reception of a **Karen Schneider Retrospective** exhibition. Finally, it is the last day to view the **Glendale Alumni Exhibition** and bid in the **18th Annual Birdhouse Auction Benefitting Habitat for Humanity**. Be sure to swing by to catch all the shows!

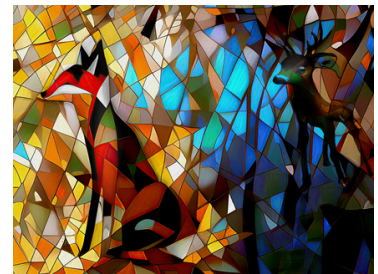
Gailey's Breakfast Cafe

Gailey's Breakfast Cafe will be open until **9 pm** for May's Art Walk! Join them for their **Happy Hour**, running from **2-6 pm** with lots of **drink & food specials**. Their featured artists this month are **Carol L. Snyder, Linda Kirchner, Jennifer Nelson, Meredith Dickson, and Madison Haines**.

Sculpture Walk Springfield

Start planning your route now to see **Sculpture Walk Springfield's** 9th Sculpture Collection! They are currently in the process of **rotating the collection** so keep your eyes peeled throughout May as they install the **new sculptures in Downtown Springfield!**

Formed: An Artist Collective



Formed is proud to present artist **Andrea Hellman** for May's FFAW from **6-9 pm!** Her recent digital artwork captures the serene beauty of family life within Springfield's vibrant arts community. Be sure to stop by and visit with the artists, enjoy light **refreshments**, and listen to live music by **The Bold Deniers**.

Hotel Vandivort



Join **Hotel Vandivort** for May's Art Walk to see work by **Kurt Caddy**. Be sure to swing by between **5-7 pm** in the lobby during FFAW to see Kurt's work!

The Historic Holland Building

Artist **HJ Schumer** will be showing new work this FFAW at the **Holland Building**. HJ's new works can be described as digital and physical collages of original photos and paintings. His images include local landmarks as well as abstract works studying color and texture. To catch the show, please use the Park Central E. entrance and come to the second floor.



OTC ARTS, DESIGN, + HUMANITIES



Join **OTC ARTS, DESIGN, + HUMANITIES** for their **OTC Student Art Exhibition!** Located on the Springfield campus at the **Jared Family Atrium**, the reception will run from **3:30-5:00 pm** during May's FFAW!

thank you to our sponsors!

