



Springfield Regional Arts Council presents First Friday Art Walk

Members host events on the first Friday of the month or you can catch the displays throughout the month during regular hours. October's First Friday events will be on October 4th with variable hours between 4:30-10 pm.

Brick City Gallery



Catch *The Biennial Faculty Exhibition* in the **east gallery** of **Brick City Gallery**. This exhibition showcases the creative work of MSU's department's faculty who exhibit nationally and internationally and represents work from all studio areas within the department. In the **west gallery**, check out a selection of winning posters from the **4th Block Triennale** showcased at Missouri State University in collaboration with **Poster Territory**.

BookMarx

BookMarx Gallery will feature the work of **William Garvin** for October's Art Walk. In a collection entitled *Fetter*, his work seeks to explore how images, words, and objects often fix themselves in our hearts and minds. Catch the show for FFAW **until 9pm!**



Park Central Branch Library



Join the **Park Central Branch Library** from **6:30-9 pm** for October's Art Walk. They will be hosting amazing work by **Debra McCamish** with her exhibit *Muses in the Gloaming!*

Hotel Vandivort

Join **Hotel Vandivort** for October's FFAW to see work by featured artist **Sherri Davis**. Her work will be displayed in Hotel Vandivort's Historic Lobby on from **4-9 pm**, be sure to check it out!

Heer's Luxury Living

Join **Heer's Luxury Living** for **coffee and other warm beverages from Coffee Ethic**. In addition, they are excited to be **featuring local art!** Check it out on October's Art Walk from **6-9 pm**.

Transformation Gallery & Tattoo

Transformation Gallery & Tattoo will be open for October's Art Walk! They will be open **6-9 pm** and will be showcasing art from their talented staff!

BE Creative



Join **BECreative** from **6-9 pm** for snacks and art featured by **EarleeArt**. EarleeArt's work includes *Talking in Circles* as well as a playful art movement *swashed butterflies* where it's about the process of enjoying art from start to finish. Be sure to swing by and check out the show!

The Gillioz Theatre

The Gillioz Theatre is excited to welcome the **South West Missouri Film Office!** Enjoy interactive fun with the **Mosaic Arts Collective**, featuring a foot piano where you can play and guess your favorite tunes. In addition, The Gallery Bar will also be open! They are also thrilled to partner with the **Two Black Ravens Foundation** to showcase the remarkable work of **Joni R. Neal**, a Midwest artist known for her abstract figures in charcoal and oil. With a BFA from Missouri State University, Joni explores themes of divine progression and family through powerful symbolism. Be sure to check it all out during FFAW!



GILLIOZ CENTER FOR
ARTS & ENTERTAINMENT

Obelisk Home



Join **Obelisk Home** for the opening reception of *Scapes and Escapes* by **Rebecca Lewis Smith**. This collection is an exploration of places she visited that left a deep impression on her. These places are reflected in the realistic and abstract pieces she created. Catch the show during FFAW from **6-10 pm!**

October
2024

map on
page 2!



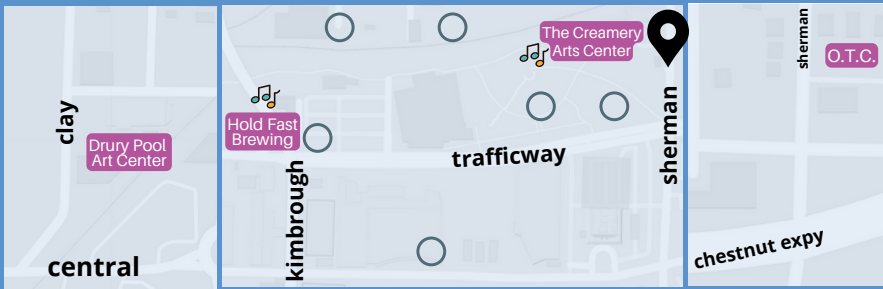
@firstfridayartwalk



@artwalksgf

springfield regional
arts
council

downtown arts district map



art walk venue

 parking

 shuttle stop

 sculpture walk art

 @sculpturewalksgf

 @sculpturewalkspringfield

sculpturewalkspringfield.org



Sculpture Walk Springfield features sculptures by local, national, and international artists throughout downtown. Their 9th annual collection of sculptures has been installed and will remain up until Spring 2025.

meet our ffaw members!

Meet our Art Walk Members who are open this month!



BE Creative, 430 S. Jefferson Ave. Suite 125, open 6-8pm for FFAW. Open regularly Mon-Fri 10am-6pm. (417) 281-8899 becreative.co



BookMarx, 325 E. Walnut St., Ste. 101, New & used books, art, and Googey the cat! Open until 9pm for FFAW, regularly Mon-Sat 10:30am-7pm. facebook.com/bookmarxbooks



Carl's Bad Designs, 314 S. Campbell Ave. Local art and sustainable fashion! Open regularly Tue - Thu 12pm - 4pm, Fri 12pm - 8pm, Sat 10am - 4pm. carls-bad-designs.square.site



Creamery Arts Center, 411 N. Sherman Parkway, open 5-7pm for FFAW. Open regularly Mon-Fri 9am-5pm. springfieldarts.org, (417) 862-ARTS (2787)



Drury Pool Art Center, 940 N. Clay St. will be open for FFAW. Open regularly Mon-Fri 12:30-4:30pm, (417) 873-6337.



Fresh Gallery, 401 N. Boonville, open 6-9pm for FFAW. Fresh is a co-op gallery home to over 20 juried artists working in a variety of media. Open regularly Tues-Sat 11am-5pm. freshgallery.org, (417) 862-9300



Forming Art Studios, 330 South Ave, open for FFAW 6-9pm only. Peek in on their seven resident artists and sign up for classes and workshops! formedgallery.com/classes



Formed: An Artist Collective, 210 E. Walnut Street, open for FFAW 6-9pm. A multi-artist gallery and retail space hosting artisans. Open regularly: Tue - Thurs 10am-6pm, Fri - Sat 10am-7pm, Sun 10am-2pm. (417) 350-1142, formedgallery.com



Gailey's Breakfast Cafe, 220 E. Walnut St., open for FFAW. Open regularly Sun-Tue 7am-3pm, Wed-Sat 7am-9pm. gaileysbreakfast.com (417) 866-5500.



Gillioz Theatre, 325 Park Central E., open for FFAW 6-9 pm. Box office open regularly Mon-Fri, 10am-4pm. gillioztheatre.com (417) 863-9491.



Heer's Luxury Living, 138 Park Central Square #101, open for FFAW 4:30-9 pm. Open regularly Mon-Fri 9 am - 5 pm. heersluxuryliving.com



Historic Holland Building, 205 Park Central E., open 6-8pm for FFAW. Open regularly Mon-Fri 8am- 5pm. thehollandbuilding.com (417) 861-7662.



Hold Fast Brewing, 235 N. Kimbrough Ave., open for FFAW 12pm-11pm. Open regularly Mon-Thurs 3-9pm, Fri-Sat 12-11pm and Sun from 11am-7pm. hfbrewing.com (417) 761-2318.



Hotel Vandivort, 305 E. Walnut, open for FFAW. The lobby is open 24/7! View their permanent collection. hotelvandivort.com (417) 832- 1515



J.L. Long Traders, 318 W. Walnut, open for FFAW 5-9pm. Their Spring hours are Wed-Sun 1-5pm or by appointment. (417) 771-5452, jllongtraders.com



MSU's Brick City Gallery, 215 W. Mill. open for FFAW. Open regularly Mon-Fri 11am-6pm, and Sat from 12-4pm. (417) 836-6794 art.missouristate.edu/



MSU's Center for International Programs, at the Jim D. Morris Center, 301 S. Jefferson open for FFAW.



MSU's Robert and Margaret Carolla Arts Exhibition Center, 326 N. Boonville, open for FFAW. Open regularly Mon-Fri 11am-6pm and Sat 12-4pm (417) 836-6999 or sec.missouristate.edu



Obelisk Home, 214 W. Phelps Ste 101, open 6-10pm for FFAW. Art gallery, retail store, and interior design! Three levels to explore. Open regularly Tues-Fri 10am-6pm & Sat 10am-5pm. obeliskhome.com (417) 616-6488



Park Central Branch Library, 128 Park Central Square, open for FFAW 6:30pm-9pm. Downtown's library hosts art and frequent artist talks. Open regularly Mon-Sat 10am-6pm, Closed Sundays. (417) 831-1342



Transformation Gallery & Tattoo, 330 E. Walnut, open for FFAW 6-9pm. Open regularly Tue-Sat 9am-6pm. (417) 869-2338, transformationgallery.com/

J.L. Long Traders



Join **J.L. Long Traders** for October's Art Walk from **10 am - 9 pm**. Check out their wide selection of unique items along with artist **Katie Hopkins' Autumn** series!

Forming Art Studios

Join **Forming Art Studios** every Monday from 10-4 pm for open studio time for any artist! Stop by on First Friday for **mini astrology readings** by **Misty Lane**, and chat with their artists from **6:30-8:30 pm**.



Hold Fast Brewing



Hold Fast Brewing is thrilled to welcome **Allie and the Catz** for FFAW! Brewery opens at **12 pm** with your favorite local brews on tap, the food truck starts serving up their delicious eats at **5 pm**, and music starts at **7 pm**. Your favorite downtown patio is waiting for you!

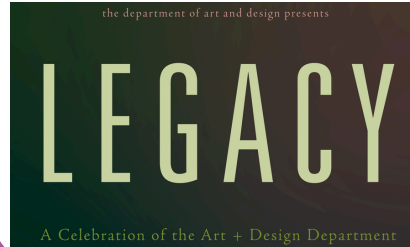
The Holland Building



The Holland Building on the square is excited to feature local artist **Doug Steere** from **6-8 pm**. Please enter the building through the entrance on Park Central E. You can find Doug's work on the second floor of the building, accessible by stairs or elevator.

Carolla Arts Exhibition Center

The Carolla Arts Exhibition Center is showing **Legacy: Celebrating the Art + Design Department**, a tribute to all the people who are responsible for where we are today, with a representative group of works from **26 studio faculty** who retired from MSU over the last 50 years. Catch the show from **6-9 pm!**



Formed: An Artist Collective



Formed is proud to present artist **Gordon Powell!** Gordon is a wood and fiber artist. Be sure to stop by on FFAW from **6-9 pm** and visit with their artists, enjoy light refreshments and live music by **Tony Menown**.

Fresh Gallery



Fresh Gallery is excited to feature artists **Nancy Brown Dornan & Cheryl Vowels** for October's FFAW! Be sure to check out their work along with their other gallery artists from **5:30-9 pm!**

International Programs

Join **MSU's International Programs** at the **Jim D. Morris Center** for **Green Essence: Nigerian Independence Day** hosted by Nigerian students! Celebrate Nigerian Independence Day through an exciting showcase of rich culture, history, and creativity from **6-8 pm!**

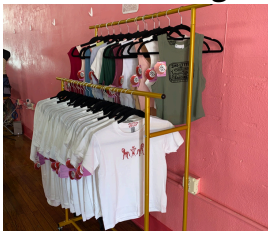


Gailey's Breakfast Cafe



Join **Gailey's Breakfast Cafe** for beautiful art and delicious food! Gailey's will be featuring art from 3 local artists: **Pam Wilder, Tiffany Collins and Carol Snyder**. Additionally, they will have a **Happy Hour** from **2-6 pm**, with drink and food specials.

Carl's Bad Designs



Join **Carl's Bad Designs** from **5-10 pm** for clothing from **Carl's Bad Designs, 207 Trinkets, and Bae Savage Vintage**. 207 will also be hosting a **charm bar** where you can make your own jewelry from their original artwork charms. **Sydney Mayab** will be showcasing their latest collection of oil paintings, and **Saphira Gale** will be releasing a zine focusing on mental health and overcoming adversity.

The Creamery Arts Center

Join the **SRAC** in celebrating **Pure Enjoyment** sponsored by **Brewer Science**. This juried exhibition honors the freedom, beauty, and harmony of the natural world. Catch the show at **The Creamery Arts Center** from **5-7 pm** with a live performance from the **Ozarks Lyric Opera!**



Drury Pool Arts Gallery



Join the **Drury Pool Arts Gallery** for FFAW to see **Finding Hope** by **Randy Bacon**, presented by **Lost and Found Grief Center**. Catch the opening reception during October's FFAW from **5-8 pm**.

thank you to our sponsors!

