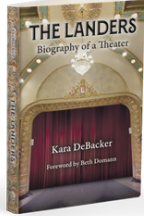




# Springfield Regional Arts Council presents First Friday Art Walk

Members host events on the first Friday of the month or you can catch the displays throughout the month during regular hours. November's First Friday events will be on November 1st with variable hours between 4:30-10 pm.

## J.L. Long Traders



The *Landers: Biography of a Theater* by local author **Kara DeBacker** is a chronicle of one of America's oldest and most storied theaters—The Landers Theater! Proceeds from *The Landers: Biography of a Theater* will benefit **Springfield Little Theatre's Supported Theatre Experience for Young People of All Abilities**. **J.L. Long Traders** will be open **10 am - 9 pm** for FFAW.

## Carolla Arts Exhibition Center

The Carolla Arts Exhibition Center is showing *Legacy: Celebrating the Art + Design Department*, a tribute to all the people who are responsible for where we are today, with a representative group of works from **25 studio faculty** who retired from MSU over the last 50 years. Catch the show from **6-9 pm!**



## Formed: An Artist Collective



**Formed** is proud to present *MOODS & MELODIES*, new art by November featured artist, **Alicia Farris**. Check out Formed for November's FFAW from **6-9 pm** and visit with their artists, enjoy light refreshments, and live music by **The Bold Deniers**.

## Gailey's Breakfast Cafe



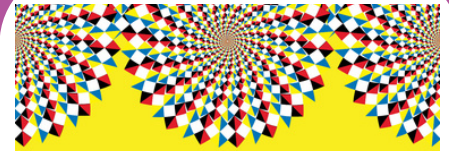
Join **Gailey's Breakfast Café** for their **\$150 and Under** exhibition featuring artists **Pam Wilder, Bonnie Schooler, Susan Neese, Meredith Dickerson, Linda Kitchener, Mariah Partain, Linda Layton, Eric Vaughn, Jenny Green, Leisa Rowley, Madison Haines, and Carol Snyder**. In addition, catch live music by pianist **Cale Goldsberry** from **6-9 pm**, **Happy Hour** with half price munchies and drink specials from **2-6 pm**, and their kitchen is open until **9 pm**, serving breakfast & dinner.

## Fresh Gallery

Swing by **Fresh Gallery** for November's FFAW to check out their featured artist **Farley Lewis**. Be sure to check out Farley's work along with their other gallery artists from **5:30-9 pm!**



## International Programs



### TOUR OF THE GLOBE

Cultural Kaleidoscope  
Jim D. Morris Center  
Nov. 1 | 5:00 p.m.

Join **MSU's International Programs** at the **Jim D Morris Center** from **5-8 pm** for the *Tour of the Globe: Cultural Kaleidoscope*, a vibrant celebration of diversity where various cultures and communities come together! Experience a dynamic blend of traditions, music, food, dance and art that honors our differences while celebrating our shared humanity.

# November 2024

# map on page 2!



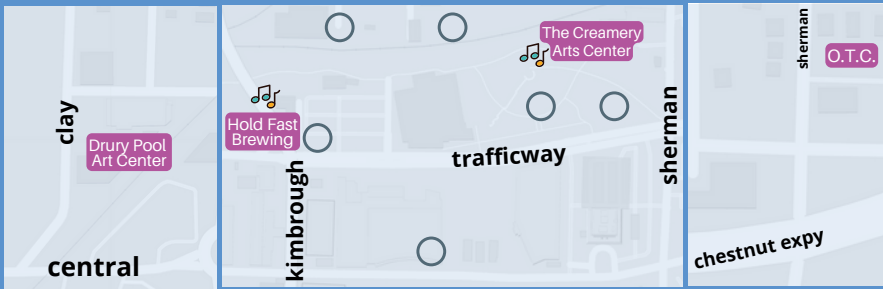
@firstfridayartwalk



@artwalksgf

springfield regional  
**arts  
council**

# downtown arts district map



art walk venue

**P** parking

 sculpture walk art

 @sculpturewalksgf

 @sculpturewalkspringfield

sculpturewalkspringfield.org



Sculpture Walk Springfield features sculptures by local, national, and international artists throughout downtown. Their 9th annual collection of sculptures has been installed and will remain up until Spring 2025.

# meet our ffaw members!

Meet our Art Walk Members who are open this month!



**BE Creative**, 430 S. Jefferson Ave. Suite 125, open 6-8pm for FFAW. Open regularly Mon-Fri 10am-6pm. (417) 281-8899 becreative.co



**Formed: An Artist Collective**, 210 E. Walnut Street, open for FFAW 6-9pm. A multi-artist gallery and retail space hosting artisans. Open regularly: Tue - Thurs 10am-6pm, Fri - Sat 10am-7pm, Sun 10am-2pm. (417) 350-1142, formedgallery.com



**J.L. Long Traders**, 318 W. Walnut, open for FFAW 5-9pm. Open regularly Tue-Sat 10am-5pm. (417) 771-5452, jllongtraders.com



**Blue Room Comedy Club**, 400 W. College St. Open regularly Tue-Sun 4-11pm. blueroomcomedyclub.com/



**MSU's Brick City Gallery**, 215 W. Mill, open for FFAW. Open regularly Mon-Fri 11am-6pm, and Sat from 12-4pm. (417) 836-6794 art.missouristate.edu/



**BookMarx**, 325 E. Walnut St., Ste. 101, New & used books, art, and Googey the cat! Open until 9pm for FFAW, regularly Mon-Sat 10:30am-7pm. facebook.com/bookmarxbooks



**Gailey's Breakfast Cafe**, 220 E. Walnut St., open for FFAW. Open regularly Sun-Tue 7am-3pm, Wed-Sat 7am-9pm. gaileysbreakfast.com (417) 866-5500.



**MSU's Center for International Programs**, at the Jim D. Morris Center, 301 S. Jefferson open for FFAW.



**Creamery Arts Center**, 411 N. Sherman Parkway, open 5-7pm for FFAW. Open regularly Mon-Fri 9am-5pm. springfieldarts.org, (417) 862-ARTS (2787)



**Gillioz Theatre**, 325 Park Central E., open for FFAW 6-9 pm. Box office open regularly Mon-Fri, 10am-4pm. gillioztheatre.com (417) 863-9491.



**MSU's Robert and Margaret Carolla Arts Exhibition Center**, 326 N. Boonville, open for FFAW. Open regularly Mon-Fri 11am-6pm and Sat 12-4pm (417) 836-6999 or sec.missouristate.edu



**Drury Pool Art Center**, 940 N. Clay St will be open for FFAW. Open regularly Mon-Fri 12:30-4:30pm, (417) 873-6337.



**Hold Fast Brewing**, 235 N. Kimbrough Ave., open for FFAW 12pm-11pm. Open regularly Mon-Thurs 3-9pm, Fri-Sat 12-11pm and Sun from 11am-7pm. hfbrewing.com (417) 761-2318.



**Obelisk Home**, 214 W. Phelps Ste 101, open 6-10pm for FFAW. Art gallery, retail store, and interior design! Three levels to explore. Open regularly Tues-Fri 10am-6pm & Sat 10am-5pm. obeliskhome.com (417) 616-6488



**Fresh Gallery**, 401 N. Boonville, open 6-9pm for FFAW. Fresh is a co-op gallery home to over 20 juried artists working in a variety of media. Open regularly Tues-Sat 11am-5pm. freshgallery.org, (417) 862-9300



**Hotel Vandivort**, 305 E. Walnut, open for FFAW. The lobby is open 24/7! View their permanent collection. hotelvandivort.com (417) 832- 1515



**Park Central Branch Library**, 128 Park Central Square, open for FFAW 6:30pm-9pm. Downtown's library hosts art and frequent artist talks. Open regularly Mon-Sat 10am-6pm, Closed Sundays. (417) 831-1342



**Forming Art Studios**, 330 South Ave, open for FFAW 6-9pm only. Peek in on their seven resident artists and sign up for classes and workshops! formedgallery.com/classes

## The Creamery Arts Center

### Call for Artists ANNUAL MEMBERS' SHOW

Sponsored by Juanita K. Hammons Hall for the performing arts  
Open to all SRAC members

Sponsored by the **Juanita K. Hammons Hall for the Performing Arts**, the **Springfield Regional Arts Council's Annual Members' Show** is an exhibit dedicated to highlighting the talent of SRAC Artist Members. Be sure to check out the show between **5-7 pm** for November's Art Walk for wonderful art, live music from **Michelle Gillam**, and complimentary snacks and refreshments!

## Forming Art Studios

Join **Forming Art Studios** on First Friday for their pop up artists: **Lavender Cowboy Art**, **Matt Brown Art**, **She Sells Sea Shells** and chat with their artists from **6:30-8:30 pm!**



## Hold Fast Brewing



**Hold Fast Brewing** is thrilled to welcome **Buster Davis** for FFAW! Brewery opens at **12 pm** with your favorite local brews on tap, the food truck starts serving up their delicious eats at **5 pm**, and music starts at **7 pm**. Your favorite downtown patio is waiting for you!



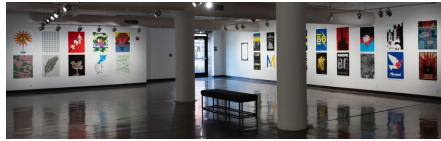
### Hotel Vandivort



Hotel Vandivort will be exhibiting artist **Janelle Patterson's** work for November's FFAW from **4-9 pm**. Be sure to swing by to check out her amazing work!

### Brick City Gallery

Catch **The Biennial Faculty Exhibition** in the **east gallery** of **Brick City Gallery**. This exhibition showcases the creative work of MSU's department's faculty who exhibit nationally and internationally and represents work from all studio areas within the department. In the **west gallery**, check out a selection of winning posters from the **4th Block Triennale** showcased at Missouri State University in collaboration with **Poster Territory**.



### Park Central Branch Library



Join the **Park Central Branch Library** from **6:30-9 pm** for November's Art Walk. They will be hosting watercolorist **Andi Dean Snethern's** exhibit **Starting Over**. **Art Talks** will start at **7 pm** with **Emery Wilcoxon** presenting on **Randy Chitto's Pottery: A Fusion of the Choctaw and American Southwest Cultures**.

### Gillioz Theatre



**GILLIOZ CENTER FOR ARTS & ENTERTAINMENT**

Join the **Gillioz Theatre** for November's First Friday Art Walk! Their **Gallery Bar** will be open, so grab a drink and explore incredible exhibits from our community: **Two Black Ravens Foundation** presents a moving collection of **photography by veterans**, sharing their stories of resilience, creativity, and healing. **SATO48** will be on-site, showcasing their work and connecting with **local filmmakers**. **SWMFO** is also participating, adding some **film trivia** fun to the evening!

### Obelisk Home

Join **Obelisk Home** from **6-10 pm** for the opening reception of **From East to West** by **Kurt Caddy** in their Main Gallery. In their Lower-Level Gallery, view **Artist Explorations**. This exhibition focuses on the individual collections of three local artists: **Sarah Jones, Amy Kalimat, and Jennifer Nelson**.



### BE Creative



Join **BEcreative** from **6-9 pm** for a leftover **Halloween Candy and Wine Pairing** and to view the **Vivid Wing Moth** for fall!

### Blue Room Comedy Club



Join **Blue Room Comedy Club** to see work by local artist **Jeremiah Gill** with **The Comics Series**, a collection of portraits in oils and acrylics. There are originals and prints available, and a purchase of an original painting will get you tickets to a comedy show! In addition, a portion of the exhibit proceeds will be donated to Arrow Creative Reuse. Catch Jeremiah's work during FFAW from **6-9 pm**.

### BookMarx



**BookMarx** Gallery will feature the work of **Pokey Alrutz** for November's Art Walk. Be sure to catch the show for FFAW until **9pm!**

### Drury Pool Arts Gallery



Join the **Drury Pool Arts Gallery** for FFAW to see the **9th Annual Best of the Midwest High School Competitive!** Catch the opening reception during November's FFAW from **5-8 pm**.

thank you  
to our  
sponsors!

